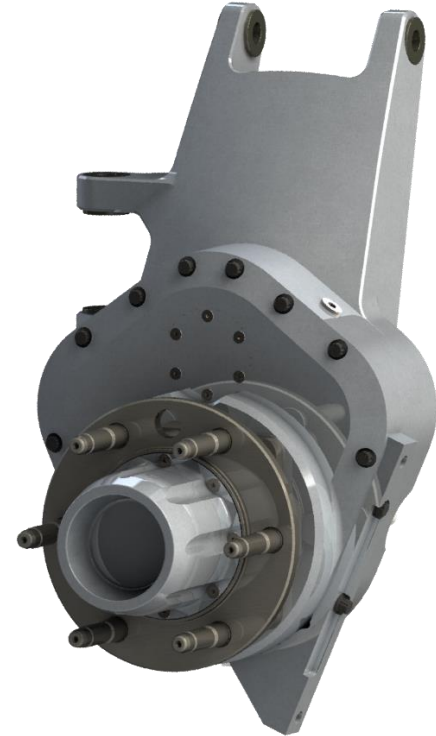


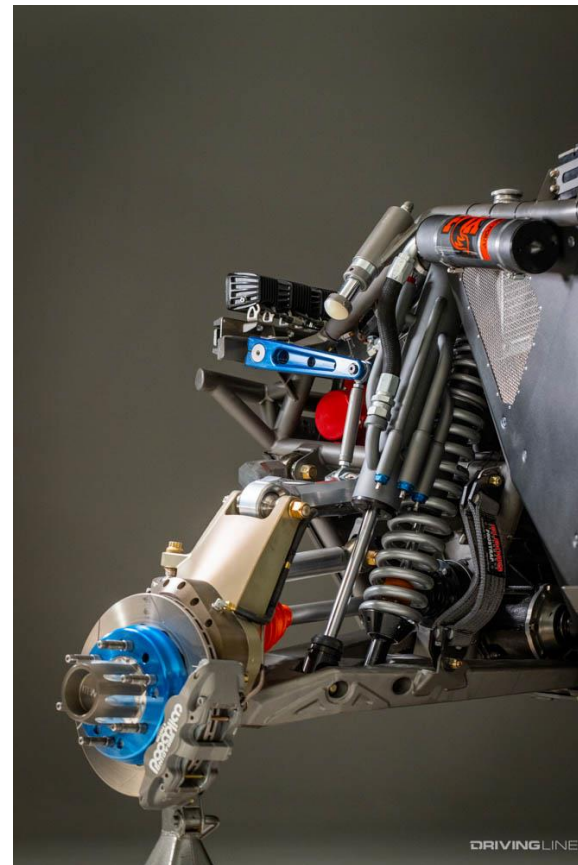
# 4 Gear Race Portals

FEATURES AND  
SPECIFICATIONS



# FEATURES AND SPECS

- 1.63 AND 1.45 GEAR RATIO OPTIONS
- CUSTOM UPRIGHT AND SUSPENSION GEOMETRY
- SPIDERTRAX UNIT BEARING INTEGRATION
- MULTIPLE BRAKE PACKAGE OPTIONS



DRIVINGLINE

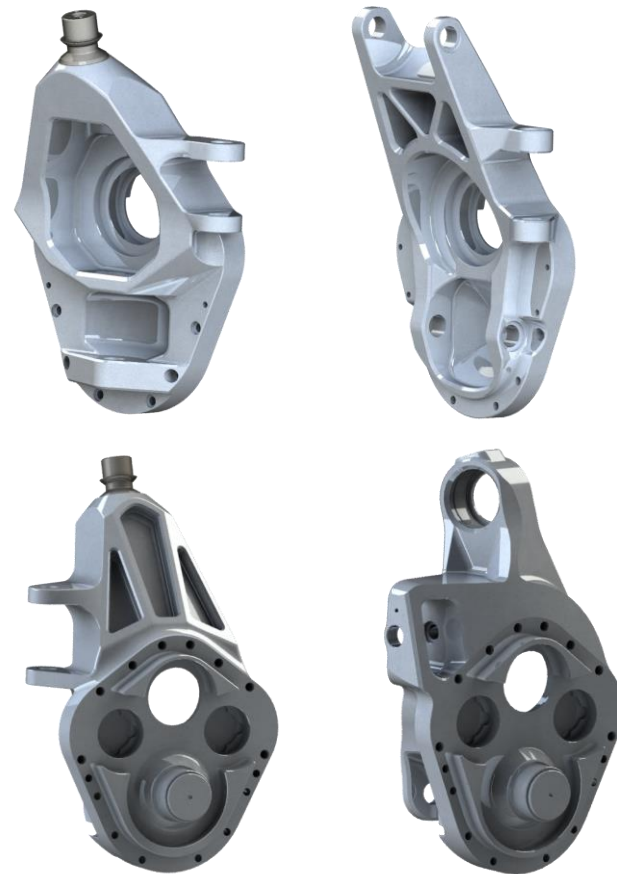
# 1.63 and 1.45 Gear Ratio Options

- OPTION OF EITHER 1.45 OR 1.63 GEAR REDUCTION PORTAL
- 4.68" – 4.96" GEAR SPREAD DEPENDING ON RATIO
- BOTH RATIOS DESIGNED, TESTED, AND PROVEN TO WITHSTAND 1000+ HP



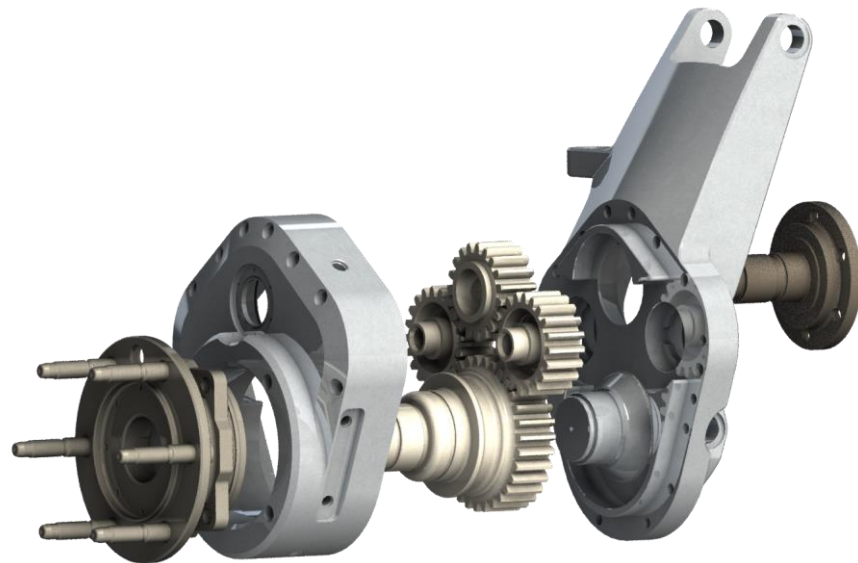
# Custom Upright and Suspension Design

- ALL UPRIGHTS ARE DESIGNED SPECIFICALLY TO FIT CUSTOMER SUSPENSION GEOMETRY
- BUILDER FILES ALLOW YOU TO GRAPH SUSPENSION POINTS ONTO A BLANK PORTAL
- USING PROVIDED SUSPENSION POINTS, UPRIGHTS ARE DESIGNED BY CUSTOMER OR BY 74WELD IN COLLABORATION WITH CUSTOMER



# Spidertrax Unit Bearing Integration

- SPIDERTRAX 56 SPLINE PRO SERIES UNIT BEARING INTEGRATION
- 40 SPLINE UPPER INPUT SHAFT MATES TO 934 CV
- FULL UNIT BEARING SERVICEABILITY WITHOUT HAVING TO SEPARATE PORTAL BOX HALVES



# Custom Brake Package Options

- UNIVERSAL PORTAL BOXES ACCEPT CUSTOM CALIPER MOUNTS
- MACHINED, BOLT-ON CALIPER MOUNTS FOR ALCON, BREMBO, WILWOOD, JAMAR AND R1 CONCEPTS
- CALIPER MOUNTS AND ROTOR HATS DESIGNED AND MACHINED TO FIT ANY APPLICATION



# Parts Breakdown

- FULLY MACHINED 7075 ALUMINUM UPRIGHT
- 6061 ALUMINUM PORTAL BOX
- 9310 HOBBED AND HEAT-TREATED GEARS
- SPIDERTRAX 56 SPLINE PRO SERIES UNIT BEARING
- SKF BEARINGS AND ROTARY SHAFT SEALS

